

CATEGORIA/CATEGORY L
CAPTURE BY GABRIEL



L16 Prugna

Reazioni al fuoco - Fire resistance*:

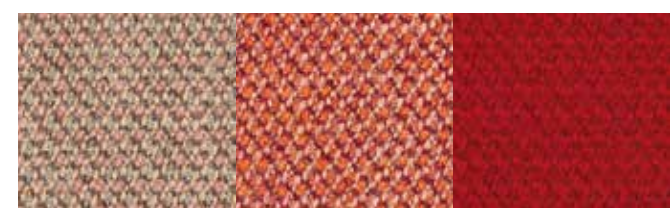
UNI 9175 Class 1
 BS EN 1021 1&2
 BS 5852 Part 1 0,1
 CA TB 117-2013

*Will also pass other flammability standards.
 Flame retardant performance is dependent upon the foam used

Composizione - composition:
 85% lana della Nuova Zelanda - New Zealand wool
 15% poliammide - polyamide

Peso - Weight
 475g/lm

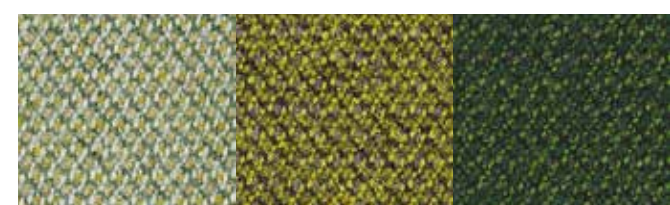
Martindale: 200.000 cicli - cycles



L01 Salmone **L03** Arancio **L03** Rosso



L04 Sabbia **L05** Caramello **L06** Noce



L07 Salvia **L08** Salvia **L09** Abete



L10 Cielo **L11** Indaco **L12** Denim



L13 Grigio chiaro **L14** Grigio scuro **L15** Carbone

CRO MA TI CA



Zona Industriale 64046 Montorio al Vomano (Teramo) ITALY
 Tel. +39 0861 590221 / 2 - Fax +39 0861 590433
 info@ltform.it - www.ltform.it

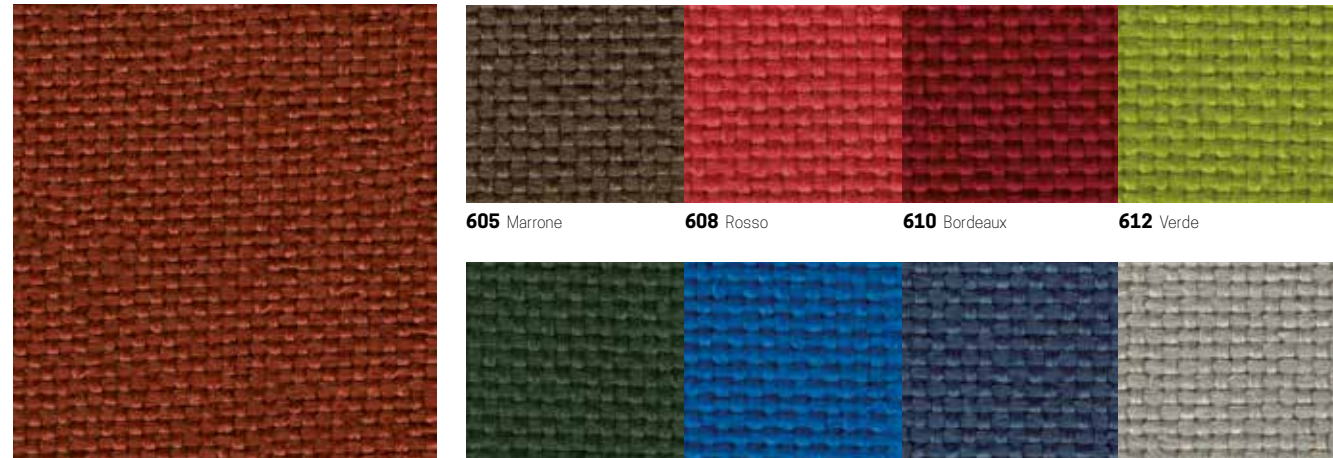


TESSUTI E RIVESTIMENTI
 UPHOLSTERY OPTIONS



COLORI E MATERIALI PER DARE STILE AL TUO SPAZIO
 COLOURS AND MATERIALS TO GIVE STYLE TO YOUR SPACE

CATEGORIA/CATEGORY E TREVI U



618 Mattone

Reazioni al fuoco - Fire resistance*:
UNI 9175 Class 1
M1
BS 5852 Crib N°5
B1 DIN 4102
EN 1021 Part 1-2
EN 13501-1 esp. 1,2
Calif. Bull.117 June 2013
FAR.25853 Classification: yes
Azimut
MED/3.19 MED/3.21: Draperies, Curtains and Bedding comp.
MED annex A.1 item A.1/3.20 Upholstered Furniture

605 Marrone **608** Rosso **610** Bordeaux **612** Verde

607 Verde scuro **604** Blu **602** Blu scuro **606** Grigio

*Will also pass other flammability standards.
Flame retardant performance is dependent upon the foam used.

Composizione - composition:
100% poliestere FR- polyester FR (Trevira CS)

Peso - weight: 630 ± 5% g/lm

Martindale: 1 50.000 ± 20% cicli - cycles

600 Grigio scuro

CATEGORIA/CATEGORY E FENICE



E01 Sabbia

Resistenza al fuoco - fire resistance*:
UNI9175 Class 1
BS 5852 Crib N° 5
EN 1021/1-2
Calif.Bull.117 June 2013
*Will also pass other flammability standards.
Flame retardant performance is dependent upon the foam used.

Composizione - composition:
75% lana - wool
25% poliammide - polyamide

E02 Giallo **E03** Arancio **E04** Rosso **E05** Bordeaux

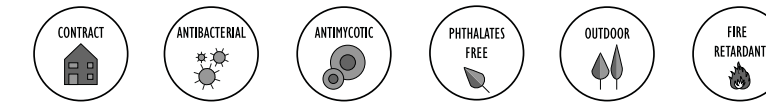
E06 Marrone **E07** Mattone **E08** Blu **E09** Grigio

Peso - weight:
500 ± 7% g/lm

Martindale:
1 00.000 ± 20% cicli - cycles

E10 Nero

CATEGORIA/CATEGORY E ALL ROAD



E78 Panna

Resistenza al fuoco - fire resistance*:
UNI9175 Class 1
EN1021/1 - 2
BS 5852 Crib N° 5
*Will also pass other flammability standards.
Flame retardant performance is dependent upon the foam used.

Composizione - composition:
84% PVC
16% cotone - cotton

E69 Sabbia **E70** Giallo **E71** Rosso **E72** Bordeaux

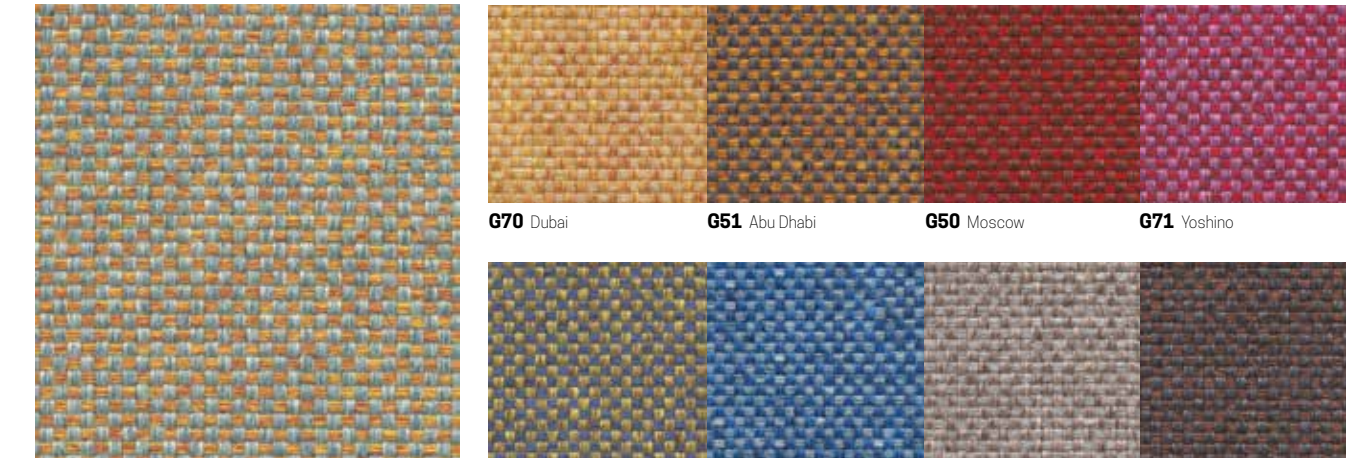
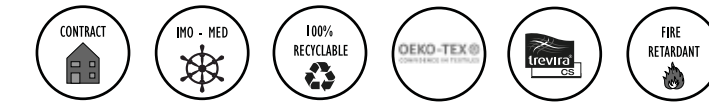
E73 Olive **E74** Blu **E75** Blu scuro **E76** Grigio

Peso - weight:
120 g/lm ± 5%

Martindale:
≥150.000 cicli - cycles

E77 Nero

CATEGORIA/CATEGORY G CLASS BY FIDIVI



G53 Casablanca

Resistenza al fuoco - fire resistance*:
UNI 9175 Class 1
UNI 9174 - 8456 Class C1
DIN 4102 Class B1
NF 92501-7 Class M1
NF D 60013 Class AM18
EN 1021-1 & 2
BS Crib 5
BS 7176 Class Medium Hazard
EN 13773 Class 1
OENORM 3800-1 Class B1,Q1,TR1
California TB117

*Will also pass other flammability standards.
Flame retardant performance is dependent upon the foam used.

Composizione - composition:
100%Poliestere (Trevira CS) - polyester

Peso - Weight:
600 ± 5% g/lm

Martindale:
75.000±10% cicli - cycles

G70 Dubai **G61** Abu Dhabi **G50** Moscow **G71** Yoshino

G58 London **G72** Ibiza **G54** Dublin **G55** Seattle

G59 Milano

CATEGORIA/CATEGORY E JET



E85 Blu

Reazioni al fuoco - Fire resistance*:
UNI 9175 Class 1
UNI 9174 - 8456 Class C1
DIN 4102 Class B1
NF 92501-7 Class M1
NF D 60013 Class AM18
EN 1021-1 & 2
BS Crib 5
BS 7176 Class Medium Hazard
EN 13773 Class 1
OENORM 3800-1 Class B1,Q1,TR1
California TB117
USA NFPA 701

E79 Blu melange **E30** Rosso **E80** Rosso melange **E81** Arancio

E82 Verde melange **E83** Verde oliva **E33** Sabbia **E84** Grigio

USA NFPA 260
IMO Part 8 Upholstery
*Will also pass other flammability standards.
Flame retardant performance is dependent upon the foam used.

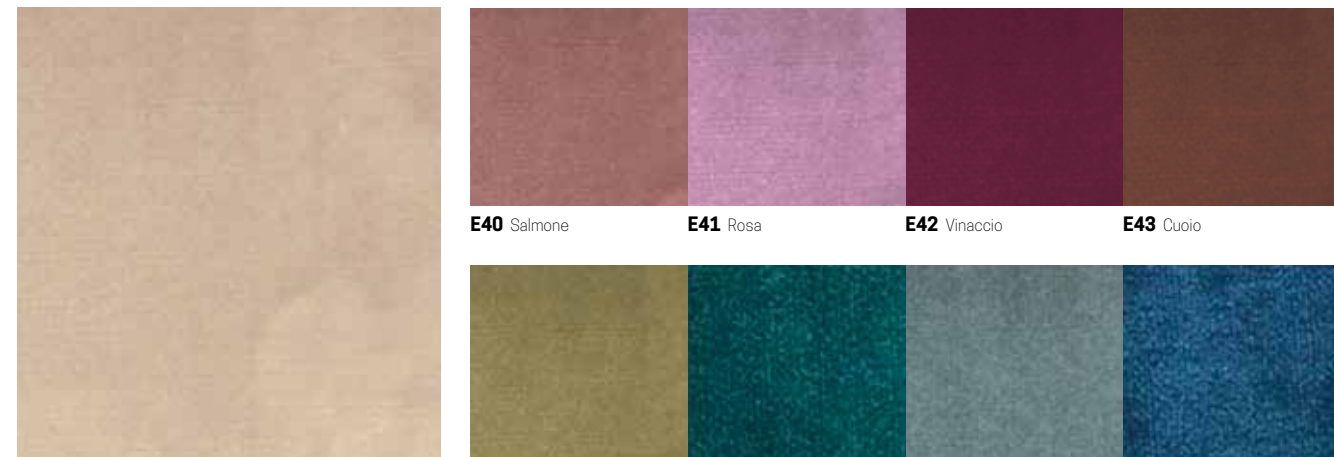
Composizione - composition:
100%Poliestere (Trevira CS) - polyester

Peso - Weight:
365 ± 5% g/lm

Martindale:
65.000 ± 10% cicli - cycles

E39 Nero

CATEGORIA/CATEGORY E LOVE



E68 Champagne

Resistenza al fuoco - fire resistance*:
BS 5852 PART1
EN 1021-1
*Will also pass other flammability standards.
Flame retardant performance is dependent upon the foam used.

Composizione - composition:
100%Poliestere - polyester

E40 Salmone **E41** Rosa **E42** Vinaccio **E43** Cuoio

E44 Terra **E45** Petrolio **E46** Zaffiro **E47** Oceano

Peso - weight:
520 g/lm

Martindale:
>100.000 cicli - cycles

E48 Grigio chiaro **E49** Blue chiaro

CATEGORIA/CATEGORY G DISCO COEX BY CHIOCCARELLO



G94 Panna

Resistenza al fuoco - fire resistance*:
UNI 9175 Class 1
EN 1021-1:2006
EN 1021-2:2006
CRIB 5
TB 117:2013
IMO
*Will also pass other flammability standards.
Flame retardant performance is dependent upon the foam used.

Composizione - composition:
70% cotone - cotton
20% acrilico - acrylic

G85 Muschio **G86** Petrolio **G87** Denim **G88** Fucsia

G89 Sabbia **G90** Terra **G91** Grigio chiaro **G92** Grigio scuro

5% viscosa - viscose
5% lino - linen

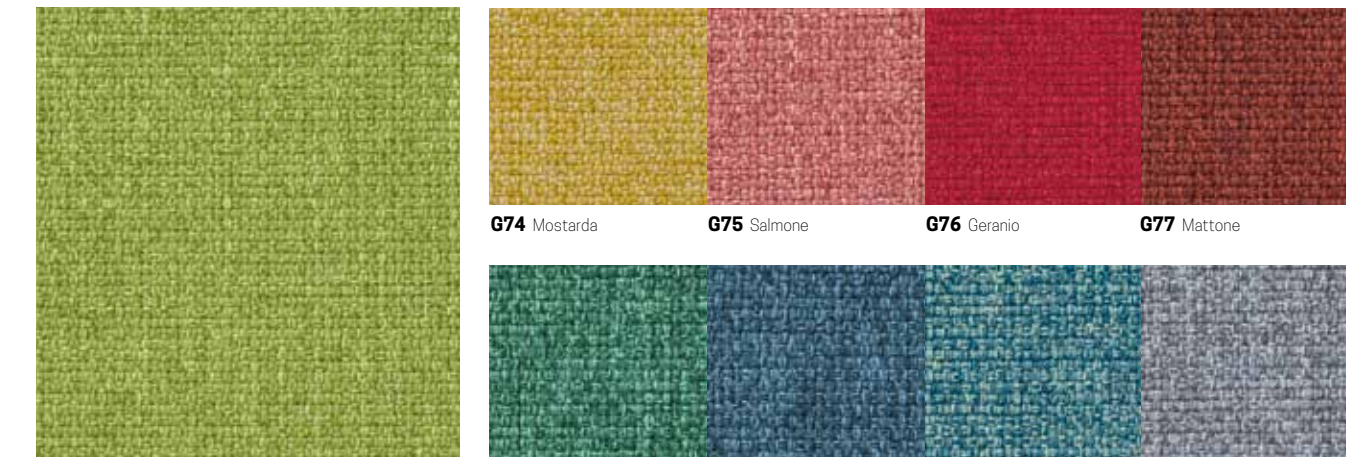
Peso - weight:
430 g/m² ± 15

Martindale:
50.000 cicli - cycles

COEX® è l'unica tecnologia brevettata 100% naturale, basata sulla molecola della cellulosa, che rende totalmente ignifuga qualsiasi fibra di origine vegetale.

G93 Carbone

CATEGORIA/CATEGORY G MEDLEY BY GABRIEL



G73 Lime

Resistenza al fuoco - fire resistance*:
BS EN 1021 1&2
BS EN 1021-1
BS 476 Part 7, class 2
Class Uno UNI 9174 - UNI 8457
ONORM A3800-B2-B3825-Q1 UK
CA TB 117-2013
ASTM E 84 Class 1
*Will also pass other flammability standards.
Flame retardant performance is dependent upon the foam used.

Composizione - composition:
100%Poliestere - polyester

Peso - Weight:
510 g/lm

Martindale:
75. 000 cicli - cycles

G74 Mostarda **G75** Salmone **G76** Geranio **G77** Mattone

G78 Verde smeraldo **G79** Petrolio **G80** Cielo **G81** Fumo

G83 Carbone